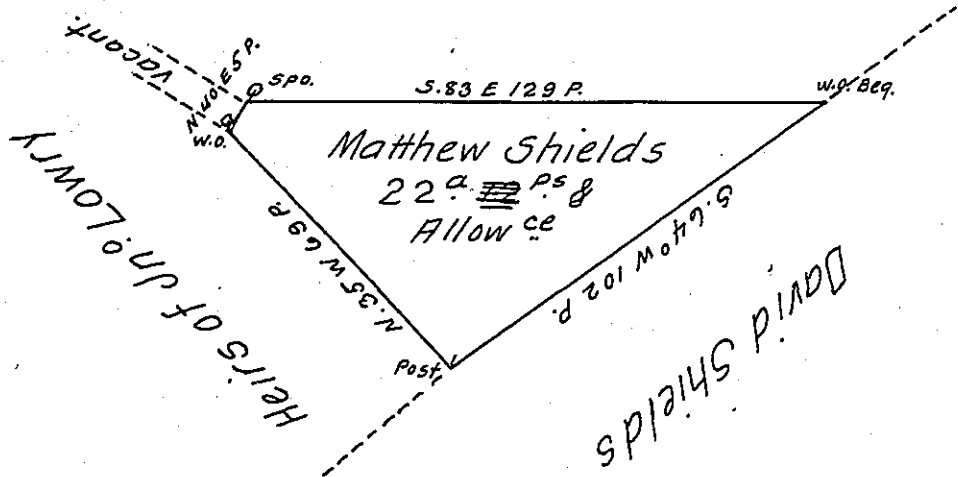


Samuel Mitchell



A Draught of a Tract of Land situate in Letterkenny Township in the County of Cumberland Containing Twenty two Acres and twelve Perches and an Allowance of Six & Cent for Roads &c. Survey'd November 4th 1768 for Matthew Shields in Pursuance of an Order of Survey Dated May 23^d 1768. N^o 4996.

To John Lukens Esq^r } John Armstrong
 Surveyor General } D.S.

IN TESTIMONY that the above is a copy of the original remaining on file in the Department of Internal Affairs of Pennsylvania, made conformably to an Act of Assembly approved the 16th day of February, 1833, I have hereunto set my Hand and caused the Seal of said Department to be affixed at Harrisburg, this third day of December 1906.

Isaac P. Pennington
 Secretary of Internal Affairs.